



Tertiary  
Education  
Commission

Te Amorangi  
Mātauranga Matua



# Using information for better decision making

**Tim Fowler**

24 August 2016

# Key Information Set – accessible on TEO websites

**Key Information Set** [newzealand.govt.nz](http://newzealand.govt.nz)

**Diploma in Information and Communications Technology**

**Entry Requirements**

**Minimum requirements** NCEA or other evidence of literacy, numeracy and ability to study at the appropriate level. See 'additional requirements' for details.

**Additional requirements**

**Duration** 2 years

**Tuition Fees**

Student fees	\$9,900
Government subsidy	\$12,028
Student loan information	<a href="#">StudyLink</a>

**Student Success**

Successful course completions	73%
-------------------------------	-----

**National Graduate Outcomes (3 years after completion)**

Median earnings	\$34,600
Earnings range	\$29,500 - \$42,750
In employment	52%
In further study	37%
On a benefit	2%

Note: all information is the most recent available relating to domestic students only  
[Click here for more information about the Key Information Set](#)

**Diploma in Information and Communications Technology**

← Test

**REQUEST INFORMATION**

**ADD TO MY STUDY OPTIONS LIST**

Programme Code: CH4023  
 Level: 6  
 Credits: 240  
 Commences: February, July  
 Applications Cut: Received all year  
 Annual Fees: \$6,200 - \$6,000  
 International Fees: \$19,150  
 Additional Costs: Advised before enrolment  
 Location: Mairā Street campus

**Key Information Set** [newzealand.govt.nz](http://newzealand.govt.nz)

**Entry Criteria**  
 Minimum entry criteria  
 NCEA or other evidence of literacy, numeracy and ability to study at the appropriate level. See 'additional criteria' for details.  
 Additional criteria

**Duration**  
 2 Years

**Student Success**  
 Successful course completions  
 71%  
 Students retained in study  
 75%

**NZ Graduate Destinations**  
 Young graduates in employment\*  
 40%  
 Young graduates in further study\*  
 40%  
 Median earnings of young graduates\*

**Estimated Total Fees**  
 Government Contribution (GST)  
 Student Loan information

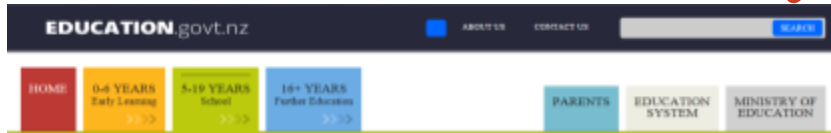
**Next steps**  
 To enrol in this programme please:  
 Complete an Admission and Enrolment Form or an International Application Form  
 If you don't meet the criteria for entry into this programme, we can help you meet entry level with our foundation and bridging programmes.  
 Alternatively, if you feel you have gained your learning through on the job experience talk to us about recognition or assessment of prior learning.

**Application documents**  
 Admission & Enrolment Form (PDF File: 251.5 KB)  
 International Application Form (PDF File: 171.3 KB)

**Recommended school subjects**  
 • English  
 • Mathematics  
 • Computing/ICT

**Example**

# Key Information Set - available centrally



## Key Information Set

newzealand.govt.nz

### Here's what you need to know

Use the Key Information Set to compare info across qualifications and education providers. You'll find it where you see qualifications info on tertiary education providers' websites.

Info about studying the qualification with this EDUCATION PROVIDER

#### ENTRY REQUIREMENTS

Qualifications or experience needed to start studying this qualification with this provider.

#### DURATION

The minimum amount of time it will take to complete the qualification with this provider.

#### TUITION FEES

**Student fees** – the estimated amount you will need to pay in tuition fees to study this qualification with this provider.

**Government subsidy** – the amount the Government subsidises your study for this qualification.

#### STUDENT SUCCESS

Successful course completions – the % of students who successfully completed courses for this qualification with this provider.



RETURN ON INVESTMENT National info about outcomes of studying in this subject area

#### MEDIAN EARNINGS

Median earnings of young graduates in employment two years after completing a qualification.

#### IN EMPLOYMENT

% of young graduates who are in any form of employment two years after completing a qualification.

#### IN FURTHER

% of young graduates undertake further tertiary study two years after completing a qualification.

Example



## Key Information Set

newzealand.govt.nz

### About the Key Information Set

The Key Information Set (KIS) is a core set of information learners have told us is important for decision-making.

#### Why do you need to know this information?

You can use this information to explain how to use the KIS and why you should be interested.

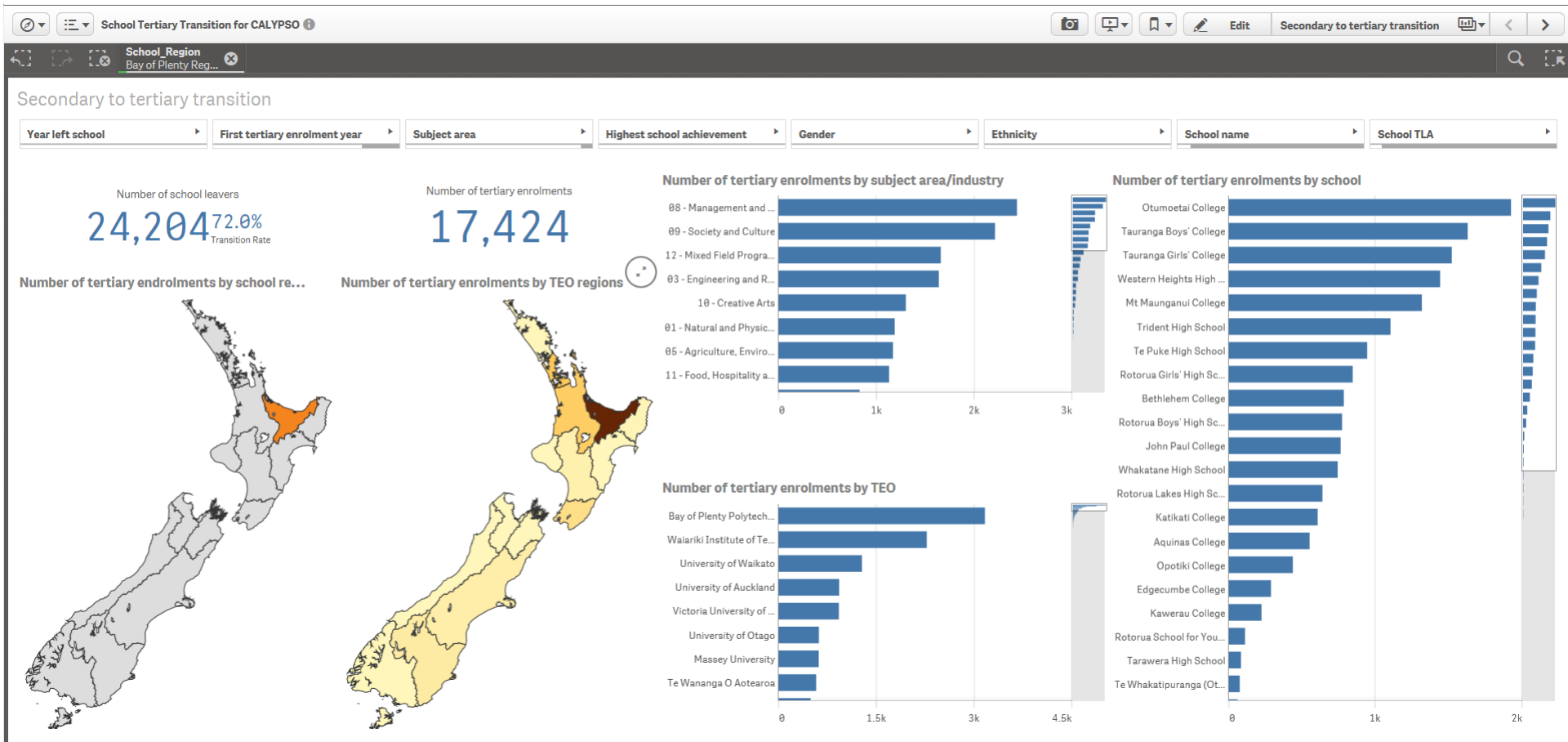
You can use the KIS to support your decisions about tertiary enrolment along with other information you may find.

The KIS is just one of many tools available and not the only source of information. You should also talk to family and friends as well as check out other online information.



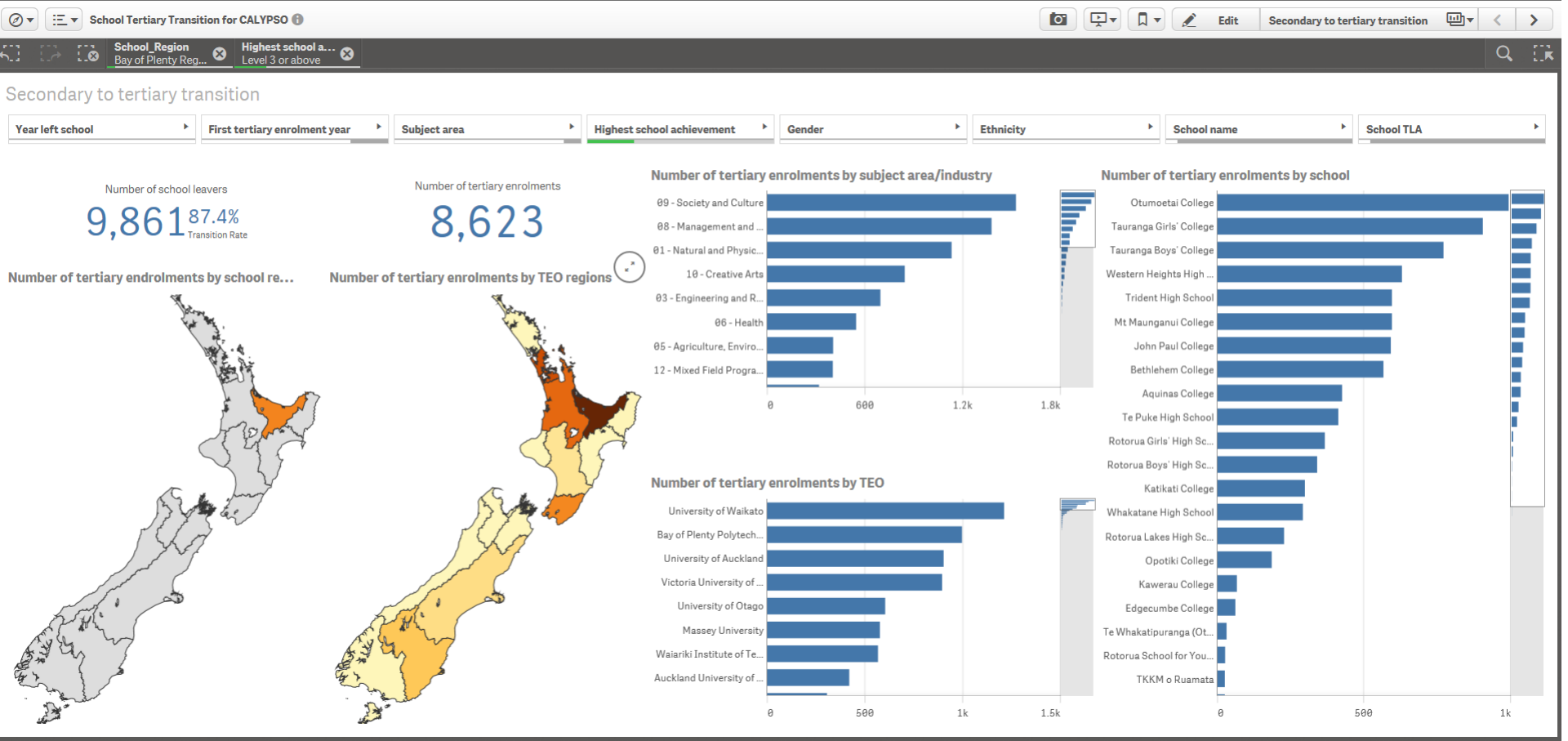


# Schools transition app



## School transition app – Bay of Plenty school leavers

- Bay of Plenty Polytechnic is the most popular destination for school leavers
- Management and commerce is the most popular subject area.



## > NCEA level 3 or equivalent

- The map on the right shows us where the learners went (tertiary wise) (The darker the colour the higher the number). For Bay of Plenty NCEA level 3 leavers - most stayed close to home. A number moved to Wellington and enrolled at Victoria University.

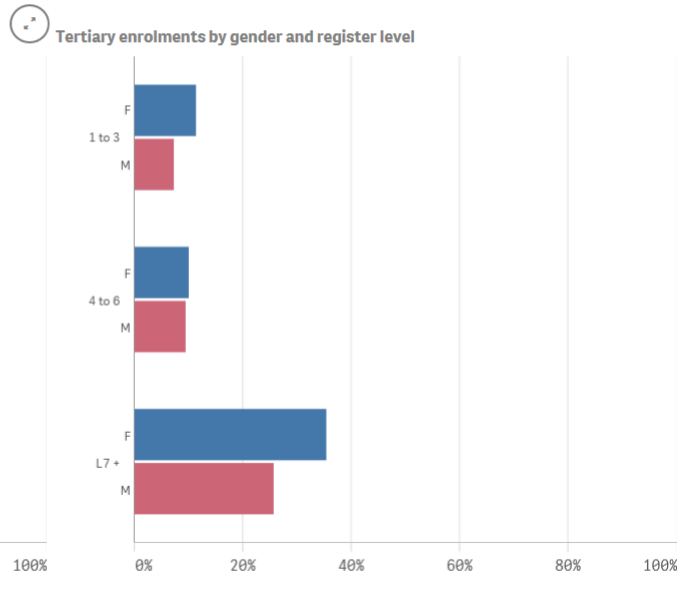
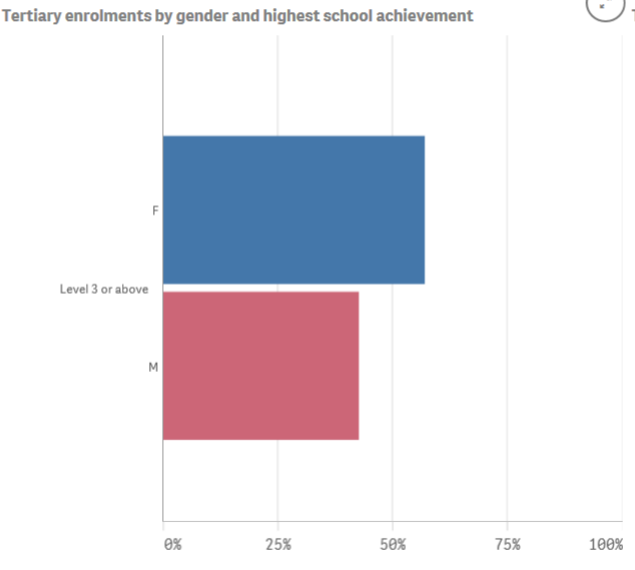
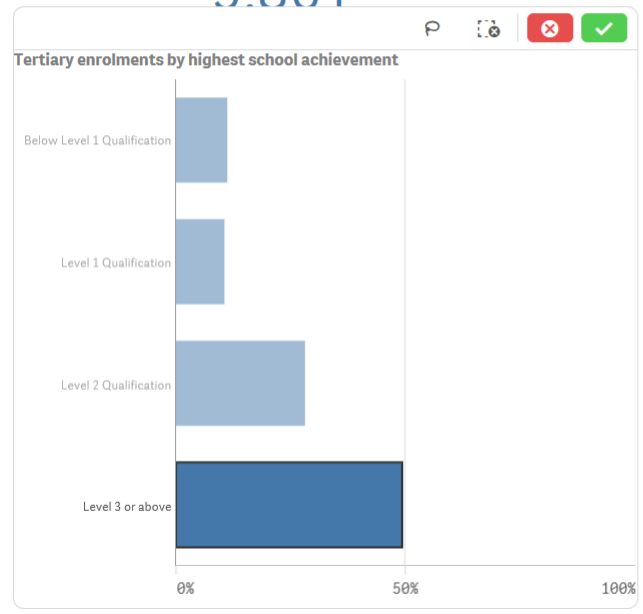
# Highest school achievement

Year left school | 
 First tertiary enrolment year | 
 Subject area | 
 Highest school achievement | 
 Gender | 
 Ethnicity | 
 School name | 
 School TLA

Number of school leavers  
**9,861** 87.4%

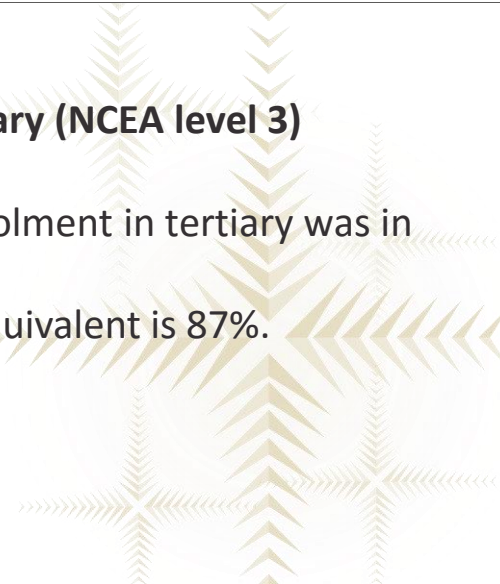
Number of tertiary enrolments  
**8,623**

Not in tertiary  
**1,238**



## > Compare level of achievement at school with the level of enrolment in tertiary (NCEA level 3)

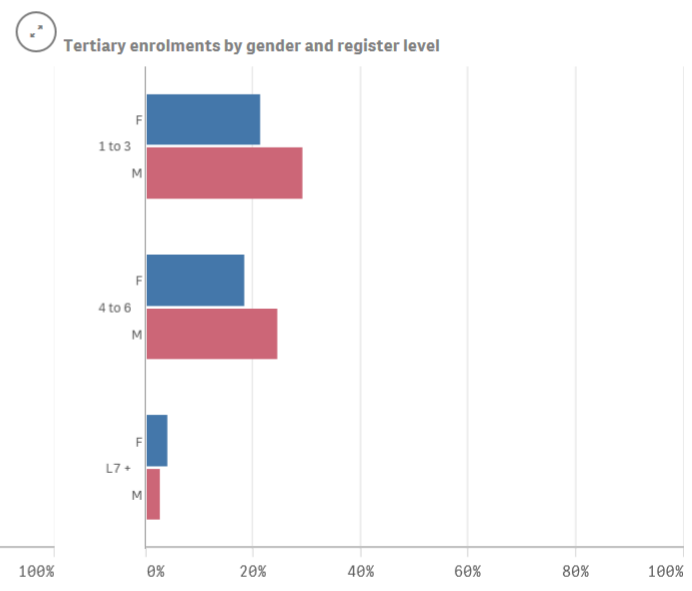
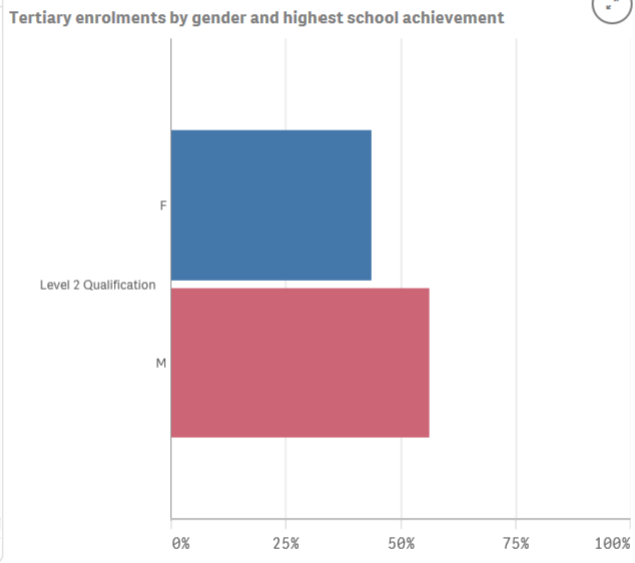
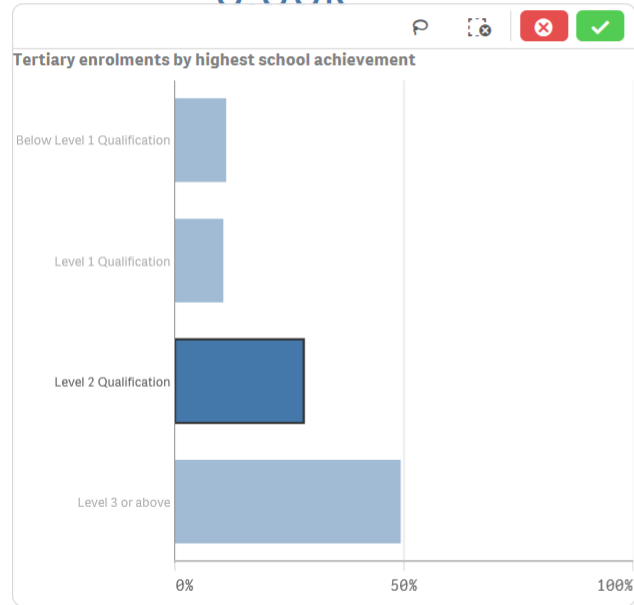
- More females than males obtained NCEA level 3 and for most their first enrolment in tertiary was in a level 7 (degree level) or above qualification.
- Bay of Plenty's tertiary transition rate for those achieving NCEA level 3 or equivalent is 87%. Nationally the rate is also 87%.



### School Achievement

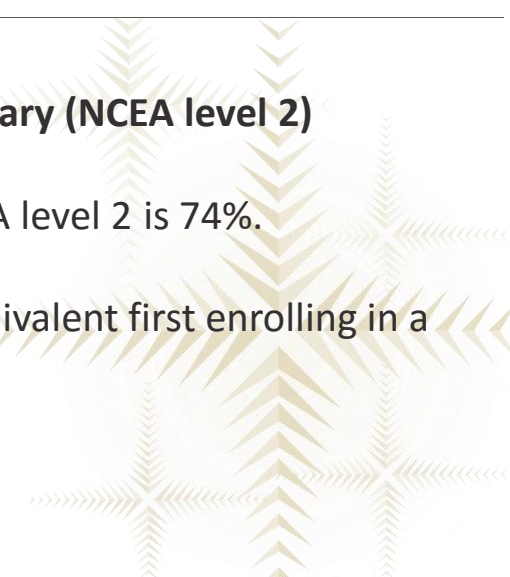
Number of school leavers  
**6 66k** 74.1%

Number of tertiary enrolments  
**4,937**

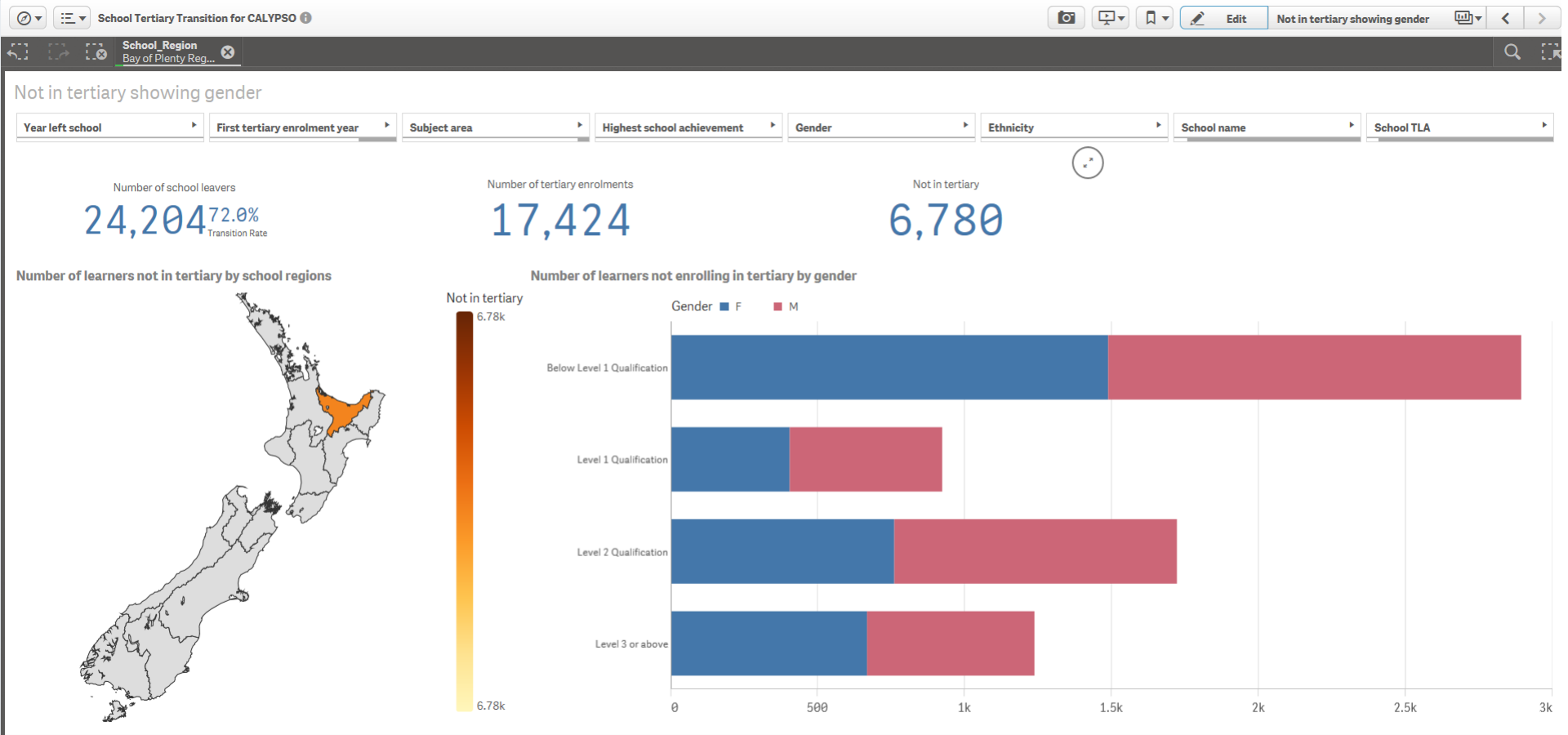


### > Compare level of achievement at school with the level of enrolment in tertiary (NCEA level 2)

- With NCEA level 2 or equivalent Bay of Plenty's tertiary transition rate NCEA level 2 is 74%. Nationally the rate is 72%.
- There is an amount of under matching, those achieving NCEA level 2 or equivalent first enrolling in a level 1 to 3 tertiary qualification.







## > Those not going into tertiary education

- Shown by highest level of achievement at school and gender.

# For more information



Tim Fowler

Tertiary Education Commission

Email [tim.fowler@tec.govt.nz](mailto:tim.fowler@tec.govt.nz)